

CIL is pleased to announce the launch of a new medium for Nitrogen-15 labeling which is versatile enough for isotopic labeling of proteins expressed in both *E.coli* and Yeast.

Bio-Express YBN

Part# CGM-5000-N

In order to mimic the performance of standard laboratory media (LB or YT) Cambridge Isotope Labs has developed a system containing Yeast Based Nutrients (YBN) that meets the requirements necessary for high expression yields of both prokaryotic and eukaryotic proteins in *E. coli* and Yeast. Bio-Express YBN is a fully rich medium, requiring no supplementation. Derived from yeast biomass, Bio-Express YBN contains the full complement of U-¹⁵N labeled amino acids, nucleic acids, M9 salts, vitamins and other micronutrients.

Bio-Express YBN actually produces more than twice the ODs of our typical fully rich medium, Bio-Express 1000 (BE 1000). See Figure 1 for the performance comparison using two common strains: MC1061 and TG1/pGFP.

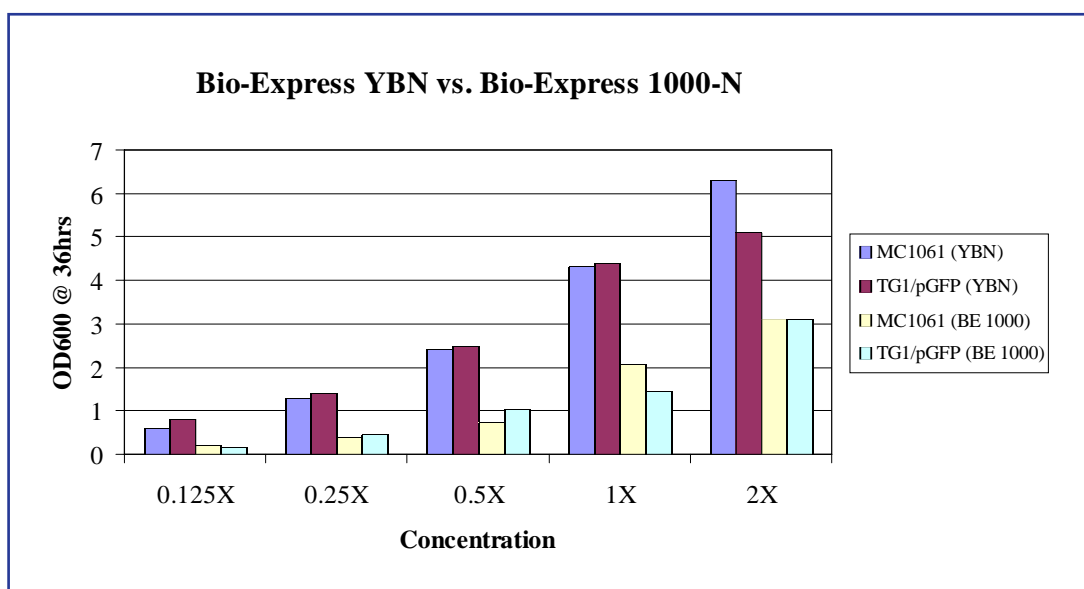


Figure 1



50 Frontage Road, Andover, MA 01810-5413 USA

PH: 800.322.1174(USA) PH: 978.749.8000 FAX: 978.749.2768 E-MAIL: bioexybn@isotope.com URL: <http://www.isotope.com>

In addition to higher production of biomass, Bio-Express YBN will produce substantial amounts of your target protein. This increased efficiency of production represents the highest value available for isotopic labeling of proteins anywhere in the market.

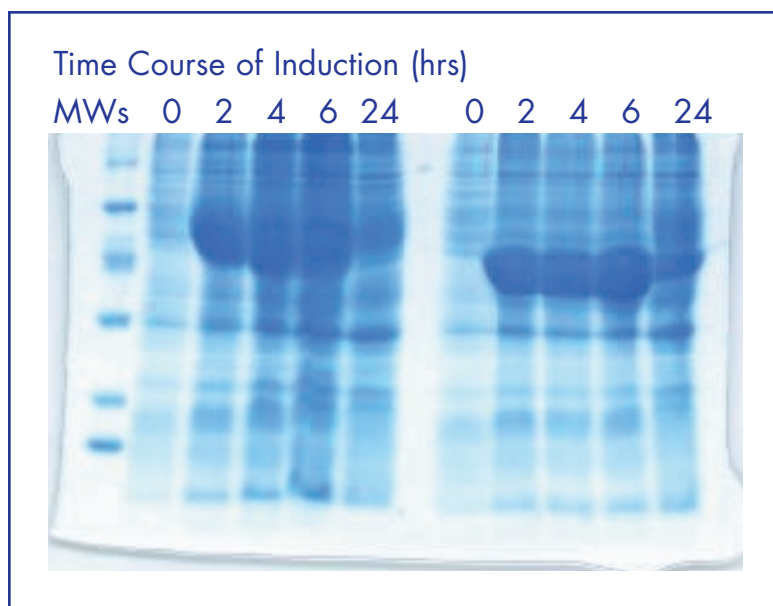


Figure 2*

**Each sample lane corresponds to the soluble fraction from 100 μ l of culture.*

Free samples are available at no cost and are packaged as 10ml of a 10X concentrate. We recommend that researchers try a sample to determine the utility of this system for their particular experiment. Bio-Express YBN is currently offered as a medium for labeling proteins in Nitrogen-15 only. Additional labels may become available at a later date. Call today for bulk pricing on quantities of 5 units or more. Kits are sold as 100ml at a 10x concentration and include a sterile filter. Diluted to a 1X concentration, one unit will provide enough nutrients for a typical 1 liter culture. Just dilute, filter and grow.

Lower cost and double the performance of our standard fully rich media, it's the solution you've been waiting for.

Please direct inquiries to bioexybn@isotope.com



50 Frontage Road, Andover, MA 01810-5413 USA

PH: 800.322.1174(USA) PH: 978.749.8000 FAX: 978.749.2768 E-MAIL: bioexybn@isotope.com URL: <http://www.isotope.com>