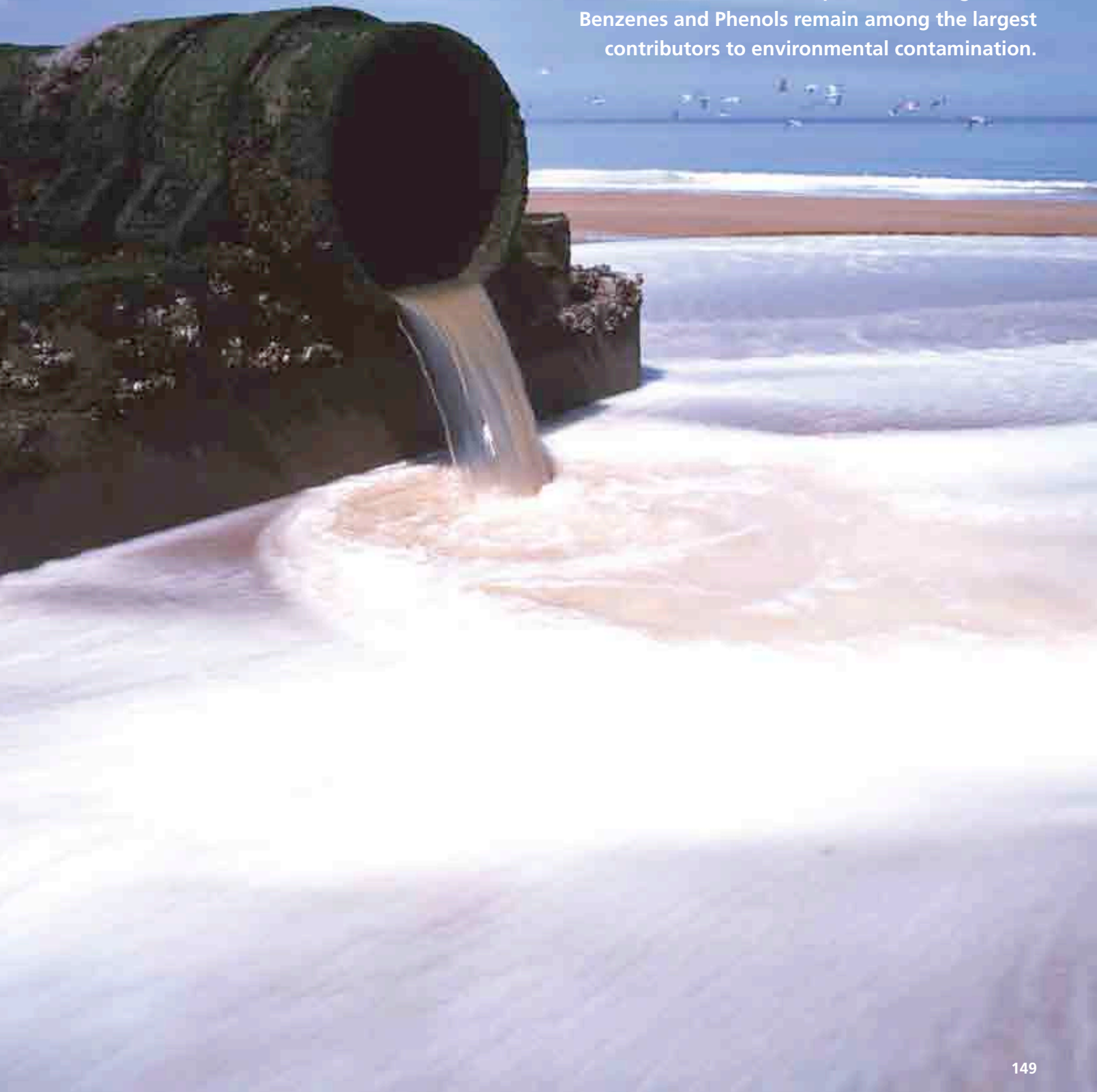


Chlorinated Benzenes and Phenols are common chemical contaminants produced in vast quantities and used in many industrial processes, bringing them in contact with the environment in a variety of locations. Owing to the sheer volume of use in commercial products, Halogenated Benzenes and Phenols remain among the largest contributors to environmental contamination.



Chlorobenzene and Chlorophenol Standard Mixtures

Owing to the sheer volume of use in commercial products, Halogenated Benzenes and Phenols remain among the largest contributors to environmental contamination. The standards listed here are in routine use in many laboratories around the world.

U.S. EPA Method 1653A

U.S. EPA method 1653A is used for the determination of Pollutants in Pulp and Paper industry wastewater. This revision was promulgated in 1997, superseding the earlier method 1653. While still used primarily for the determination of Chlorophenolic compounds, Revision A incorporates several changes to the analytical procedure, including the use of specially formulated standard mixtures applicable to this revision.

U.S. EPA CLP DMC Standard Mixtures

EPA's Contract Laboratory Program (CLP) has developed methods for the analysis of volatile and semi-volatile compounds which utilize isotopically labeled internal standards. These Deuterated Monitoring Compounds (DMCs) have been added to strengthen the analysis by providing sample-by-sample internal standard addition. CIL's CLP DMC standard mixtures are designed to match requirements of the OLC and SOM test methods.

U.S. EPA Method 1624/1625

CIL maintains a full suite of standards used for the analysis of volatile and semi-volatile organic compounds by US EPA Method 1624/1625.

Chlorobenzene and Chlorophenol Standard Mixtures

Catalog #	Compound	Amount
EM-1724-A	¹³ C-Labeled Chlorobenzene Cocktail Solution – Mono, Di, Tri Isomers	1.2 mL in Isooctane
EM-1724-B	¹³ C-Labeled Chlorobenzene Cocktail Solution – Mono, Di, Tri Isomers	1.2 mL in Methanol

Labeled	(µg/mL)
Chlorobenzene (¹³ C ₆ ,99%)	100
1,4-Dichlorobenzene (¹³ C ₆ ,99%)	100
1,2,4-Trichlorobenzene (¹³ C ₆ ,99%)	100

EM-1725-A	¹³ C-Labeled Chlorobenzene Cocktail Solution – Tetra, Penta, Hexa Isomers	1.2 mL in Isooctane
EM-1725-B	¹³ C-Labeled Chlorobenzene Cocktail Solution – Tetra, Penta, Hexa Isomers	1.2 mL in Methanol

Labeled	(µg/mL)
1,2,4,5-Tetrachlorobenzene (¹³ C ₆ ,99%)	100
Pentachlorobenzene (¹³ C ₆ ,99%)	100
Hexachlorobenzene (¹³ C ₆ ,99%)	100

NEW ES-5401	¹³ C-Labeled Mono-Hexa Chlorobenzene Solution	1.2 mL in Toluene
--------------------	--	-------------------

Labeled	(µg/mL)
Chlorobenzene (¹³ C ₆ ,99%)	500
1,4-Dichlorobenzene (¹³ C ₆ ,99%)	500
1,2,3-Trichlorobenzene (¹³ C ₆ ,99%)	500
1,2,3,4-Tetrachlorobenzene (¹³ C ₆ ,99%)	500
Pentachlorobenzene (¹³ C ₆ ,99%)	500
Hexachlorobenzene (¹³ C ₆ ,99%)	500

NEW ES-5406	Native Mono-Hexa Chlorobenzene Solution	1.2 mL in Toluene
--------------------	---	-------------------

Unlabeled	(µg/mL)
Chlorobenzene	500
1,4-Dichlorobenzene	500
1,2,3-Trichlorobenzene	500
1,2,3,4-Tetrachlorobenzene	500
Pentachlorobenzene	500
Hexachlorobenzene	500

EM-1726-A	¹³ C-Labeled Chlorophenol Cocktail Solution – Mono, Di, Tri Isomers	1.2 mL in Isooctane
EM-1726-B	¹³ C-Labeled Chlorophenol Cocktail Solution – Mono, Di, Tri Isomers	1.2 mL in Methanol

Labeled	(µg/mL)
4-Chlorophenol (¹³ C ₆ ,99%)	100
2,4-Dichlorophenol (¹³ C ₆ ,99%)	100
2,4,6-Trichlorophenol (¹³ C ₆ ,99%)	100

EM-1727-A	¹³ C-Labeled Chlorophenol Cocktail Solution – Tri, Tetra, Penta Isomers	1.2 mL in Isooctane
EM-1727-B	¹³ C-Labeled Chlorophenol Cocktail Solution – Tri, Tetra, Penta Isomers	1.2 mL in Methanol

Labeled	(µg/mL)
2,4,5-Trichlorophenol (¹³ C ₆ ,99%)	100
2,3,4,5-Tetrachlorophenol (¹³ C ₆ ,99%)	100
Pentachlorophenol (¹³ C ₆ ,99%)	100

U.S. EPA Method 1653A Standard Mixtures

Catalog #	Compound	Amount
EM-4173	Method 1653A Labeled Chlorophenolic Derivatives Mixture (Note: unlabeled Internal Standard, 3,4,5-Trichlorophenol already formulated into the	2 x 1 mL

Vial 1 (Methanol) – 1 mL

Labeled	(µg/mL)
2,4-Dichlorophenol (¹³ C ₆ ,99%)	250
4-Chloroguaiacol (¹³ C ₆ ,99%)	250
4,5-Dichlorocatechol (ring- ¹³ C ₆ ,99%)	250
4,5,6-Trichloroguaiacol (¹³ C ₆ ,99%)	250
Pentachlorophenol (¹³ C ₆ ,99%)	250
3,4,5,6-Tetrachloroguaiacol (¹³ C ₆ ,99%)	250
3,4,5,6-Tetrachlorocatechol (ring- ¹³ C ₆ ,99%)	250
3,4,5-Trichlorophenol (unlabeled) (I.S.)	250

Vial 2 (Acetone) – 1 mL

Labeled	
5-Chlorovanillin (ring- ¹³ C ₆ ,99%)	250

EM-4181	Method 1653A Regulated Chlorophenolics Mixture-1	1 mL in Methanol
---------	---	------------------

Unlabeled

Pentachlorophenol	1000
Tetrachloroguaiacol	1000
3,4,5-Trichlorocatechol	1000
3,4,5-Trichloroguaiacol	500
4,5,6-Trichloroguaiacol	500
2,4,6-Trichlorophenol	500
Tetrachlorocatechol	1000
2,3,4,6-Tetrachlorophenol	500
3,4,6-Trichlorocatechol	1000
3,4,6-Trichloroguaiacol	500
2,4,5-Trichlorophenol	500

EM-4182	Method 1653A Regulated Chlorophenolics Mixture-2	1 mL in Acetone
---------	---	-----------------

Unlabeled

Trichlorosyringol	500
-------------------	-----

EM-4183	Method 1653A Other Chlorophenolics Mixture-1	1 mL in Methanol
---------	---	------------------

Unlabeled

4-Chlorocatechol	250
4-Chlorophenol	250
3,6-Dichlorocatechol	500
3,4-Dichloroguaiacol	500
4,6-Dichloroguaiacol	500
2,6-Dichlorophenol	500
4-Chloroguaiacol	250
3,4-Dichlorocatechol	500
4,5-Dichlorocatechol	500
4,5-Dichloroguaiacol	500
2,4-Dichlorophenol	500

U.S. EPA Method 1653A Standard Mixtures

Catalog #	Compound	Amount
EM-4184	Method 1653A Other Chlorophenolics Mixture-2	1 mL in Acetone
	Unlabeled	(µg/mL)
	2-Chlorosyringaldehyde	500
	5-Chlorovanillin	500
	6-Chlorovanillin	500
	2,6-Dichlorosyringaldehyde	1000
	5,6-Dichlorovanillin	1000
EM-4185	Set of Regulated Chlorophenolics Mixtures 1 Each: EM-4181 and EM-4182	2 x 1 mL
EM-4186	Set of Other Chlorophenolics Mixtures 1 Each: EM-4183 and EM-4184	2 x 1 mL
EM-4180	Set of Chlorophenolics Mixtures 1 Each: EM-4181, EM-4182, EM-4183 and EM-4184	4 x 1 mL

U.S. EPA Method 1653 Standard Mixtures

EM-4018	Method 1653 Unlabeled Chloroguaiacol Cocktail	1 mL in Acetone
	Unlabeled	
	4-Chloroguaiacol	250
	3,4-Dichloroguaiacol	500
	4,5-Dichloroguaiacol	500
	4,6-Dichloroguaiacol	500
	3,4,5-Trichloroguaiacol	500
	3,4,6-Trichloroguaiacol	500
	4,5,6-Trichloroguaiacol	500
	Tetrachloroguaiacol	1000
EM-4028	Instrument Performance Standard	1 mL in Acetone
	Unlabeled	
	2,2'-Difluorobiphenyl	5000

U.S. EPA CLP DMC Standard Mixtures

Catalog #	Compound	Amount
ES-5037	CLP Semi-Volatiles DMC Stock Solution	1.2 mL in Methylene

Labeled	(µg/mL)
Phenol (D ₅ ,98%)	2000
Bis(2-chloroethyl) ether (D ₈ ,98%)	2000
2-Chlorophenol (D ₄ ,98%)	2000
4-Methylphenol (<i>p</i> -Cresol) (D ₈ ,98%)	2000
Nitrobenzene (D ₅ ,99%)	2000
2-Nitrophenol (D ₄ ,98%)	2000
2,4-Dichlorophenol (D ₃ ,98%)	2000
4-Chloroaniline (D ₄ ,98%)	2000
Dimethyl phthalate (dimethyl-D ₆ ,98%)	2000
Acenaphthylene (D ₈ ,98%)	2000
4-Nitrophenol (D ₄ ,98%)	2000
Fluorene (D ₁₀ ,98%)	2000
4,6-Dinitro-2-methylphenol (ring-D ₂ ,98%)	2000
Anthracene (D ₁₀ ,98%)	2000
Pyrene (D ₁₀ ,98%)	2000
Benzo[a]pyrene (D ₁₂ ,98%)	2000

ES-5038	CLP OLC Volatiles DMC Stock Solutions 1 Each: ES-5038-1 and ES-5038-2	1 set
ES-5038-1	CLP OLC Volatiles Non-Ketone DMC Stock Solution	1 mL in Methanol-OD
ES-5038-2	CLP OLC Volatiles Ketone DMC Stock Solution	0.5 mL in Methanol-D ₄

Labeled	ES-5038-1	ES-5038-2
Vinyl chloride (D ₃ ,98%)	100	–
Chloroethane (D ₅ ,98%)	100	–
1,1-Dichloroethene (D ₂ ,98%)	100	–
2-Butanone (1,1,1,3,3-D ₅ ,98%)	–	200
Chloroform (D,98%)	100	–
1,2-Dichloroethane (D ₄ ,99%)	100	–
Benzene (D ₆ ,99.5%)	100	–
1,2-Dichloropropane (D ₆ ,98%)	100	–
Toluene (D ₈ ,99.6%)	100	–
<i>cis/trans</i> -1,3-Dichloropropene (D ₄ ,98%)	100	–
2-Hexanone (1,1,1,3,3-D ₅ ,98%)	–	200
Bromoform (D,99.5%)	100	–
1,1,2,2-Tetrachloroethane (D ₂ ,99.6%)	100	–
1,2-Dichlorobenzene (D ₄ ,99%)	100	–

ES-5038-10X	CLP Volatiles DMC Stock Solutions (10X concentration) 1 Each: ES-5038-1-10X (10X concentration of ES-5038-1) and ES-5038-2-10X (10X concentration of ES-5038-2)	1 set
-------------	---	-------

U.S. EPA CLP DMC Standard Mixtures

Catalog #	Compound	Amount
NEW ES-5286	CLP SOM Volatiles Non-Ketone DMC Stock Solution	1 mL in Methanol-OD
NEW ES-5286-10X	CLP SOM Volatiles Non-Ketone DMC 10X Stock Solution	1 mL in Methanol-OD

Labeled	ES-5286 (µg/mL)	ES-5286-10X (µg/mL)
Vinyl chloride (D₃,98%)	100	1000
Chloroethane (D₅,98%)	100	1000
1,1-Dichloroethylene (2,2-D₂,98%)	100	1000
Chloroform (D,99.8%)	100	1000
1,2-Dichloroethane (D₄,99%)	100	1000
Benzene (D₆,99.5%)	100	1000
1,2-Dichloropropane (D₆,98%)	100	1000
Toluene (D₈,99.5%)	100	1000
1,3-Dichloropropene (D₄,98%) <i>cis/trans</i> mix	100	1000
1,1,1,2-Tetrachloroethane (D₂,99.6%)	100	1000
1,2-Dichlorobenzene (D₄,99%)	100	1000

NEW ES-5287	CLP SOM Volatiles Ketone DMC Stock Solution	0.5 mL in Methanol-OD
NEW ES-5287-10X	CLP SOM Volatiles Ketone DMC 10X Stock Solution	0.5 mL in Methanol-OD

Labeled	ES-5287	ES-5287-10X
2-Butanone (1,1,1,3,3-D₅,98%)	500	5000
2-Hexanone (1,1,1,3,3-D₅,98%)	500	5000

NEW ES-5288	CLP SOM Volatiles 1,4-Dioxane DMC Stock Solution	1 mL in Methanol-OD
NEW ES-5288-10X	CLP SOM Volatiles 1,4-Dioxane 10X DMC Stock Solution	1 mL in Methanol-OD

Labeled	ES-5288	ES-5288-10X
1,4-Dioxane (<i>p</i>-Dioxane) (D₈,99%)	1250	12,500

U.S. EPA Methods 1624/1625 Standard Mixtures

Catalog #	Compound	Amount
ES-2036	Acid Extractables Mixture-3	1 mL in Benzene-D ₆
	Labeled	(µg/mL)
(EPA 222A)	4-Chloro-3-methylphenol (2,6-D₂,98%)	5000
(EPA 224A)	2-Chlorophenol (3,4,5,6-D₄,99%)	5000
(EPA 231A)	2,4-Dichlorophenol (3,5,6-D₃,98%)	5000
(EPA 234A)	2,4-Dimethylphenol (3,5,6-D₃,98%)	5000
(EPA 260A)	4,6-Dinitro-2-methylphenol (3,5-D₂,98%)	5000
(EPA 259A)	2,4-Dinitrophenol (3,5,6-D₃,98%)	5000
(EPA 257A)	2-Nitrophenol (3,4,5,6-D₄,98%)	5000
(EPA 258A)	4-Nitrophenol (2,3,5,6-D₄,98%)	5000
(EPA 264A)	Pentachlorophenol (¹³C₆,99%)	5000
(EPA 265A)	Phenol (2,3,4,5,6-D₅,98%)	5000
(EPA 631A)	2,4,5-Trichlorophenol (3,6-D₂,98%)	5000
(EPA 221A)	2,4,6-Trichlorophenol (3,5-D₂,98%)	5000

ES-2022-A	Base Neutrals Mixture-4.1	1 mL in Benzene-D ₆
	Labeled	
(EPA 277B)	Acenaphthylene (D₈,98%)	5000
(EPA 274B)	Benzo[b]fluoranthene (D₁₂,98%)	5000
(EPA 279B)	Benzo[g,h,i]perylene (D₁₂,98%)	5000
(EPA 273B)	Benzo[a]pyrene (D₁₂,98%)	5000
(EPA 242B)	Bis(2-chloroisopropyl) ether (D₁₂,95%)	5000
(EPA 226B)	1,3-Dichlorobenzene (D₄,98%)	5000
(EPA 235B)	2,4-Dinitrotoluene (3,5,6-D₃,98%)	5000
(EPA 231B)	Fluoranthene (D₁₀,98%)	5000
(EPA 252B)	Hexachloro-1,3-butadiene (¹³C₄,98%)	5000
(EPA 253B)	Hexachlorocyclopentadiene (random-¹³C₄,99%)*	5000
(EPA 281B)	Phenanthrene (D₁₀,98%)	5000

*NOTE: Hexachlorocyclopentadiene decomposes upon exposure to light and is usually not observed.

ES-2002	Base Neutrals Mixture-4.3	1 mL in Benzene-D ₆
	Labeled	
(EPA 241B)	4-Bromophenyl phenyl ether (phenyl-D₅,98%)	5000
(EPA 220B)	2-Chloronaphthalene (D₇,98%)	5000
(EPA 240B)	4-Chlorophenyl phenyl ether (phenyl-D₅,98%)	5000
(EPA 268B)	Di-n-butyl phthalate (3,4,5,6-D₄,99%)	5000
(EPA 270B)	Diethyl phthalate (3,4,5,6-D₄,99%)	5000
(EPA 269B)	Di-n-octyl phthalate (3,4,5,6-D₄,99%)	5000
(EPA 209B)	Hexachlorobenzene (¹³C₆,99%)	5000
(EPA 212B)	Hexachloroethane (1-¹³C,99%)	5000
(EPA 254B)	Isophorone (3-methyl-D₃;2,4,4,6,6-D₅,98%)	5000
(EPA 208B)	1,2,4-Trichlorobenzene (3,5,6-D₃,98%)	5000

U.S. EPA Methods 1624/1625 Standard Mixtures

Catalog #	Compound	Amount
ES-2041-A	Base Neutrals Dilution Mixture-5	10 mL in Benzene-D ₆

Labeled		(µg/mL)
(EPA 602B)	2-Aminonaphthalene (ring-D₇,98%)	500
(EPA 205B)	Benzidine (ring-D₈,98%)	500
(EPA 511B)	Di-<i>n</i>-butylamine (D₁₈,98%)	500
(EPA 228B)	3,3'-Dichlorobenzidine (ring-D₆,98%)	500
(EPA 607B)	Diphenylamine (D₁₀,98%)	500
(EPA 237B)	1,2-Diphenylhydrazine (D₁₀,98%)	500
(EPA 603B)	2-Methylpyridine (D₇,98%)	500
(EPA 262B)	<i>N</i>-Nitrosodiphenylamine (2,2',4,4',6,6'-D₆,98%)	500

ES-2026	Base Neutrals Dilution Mixture-5.2	1 mL in Benzene-D ₆
---------	---	--------------------------------

Labeled		
(EPA 628B)	Carbazole-NH (D₈,98%)	5000
(EPA 261B)	<i>N</i>-Nitrosodimethylamine (dimethyl-D₆,98%)	5000
(EPA 263B)	<i>N</i>-Nitrosodi-<i>n</i>-propylamine (dipropyl-D₁₄,98%)	5000

ES-2025-A	Base Neutrals Dilution Mixture-5.1 Contains One Each of ES-2041-A and ES-2026	1 Set
-----------	--	-------

ES-2003	Base Neutrals Mixture-6.2	2 x 1 mL in 50% Benzene-D ₆ and 50% Methylene chloride-D ₂
---------	----------------------------------	---

Labeled		
(EPA 201B)	Acenaphthene (D₁₀,99%)	2500
(EPA 278B)	Anthracene (D₁₀,98%)	2500
(EPA 275B)	Benzo[<i>k</i>]fluoranthene (D₁₂,98%)	2500
(EPA 218B)	Bis(2-chloroethyl) ether (D₈,98%)	2500
(EPA 276B)	Chrysene (D₁₂,98%)	2500
(EPA 280B)	Fluorene (D₁₀,98%)	2500
(EPA 255B)	Naphthalene (D₈,99%)	2500
(EPA 284B)	Pyrene (D₁₀,98%)	2500

ES-2004	Base Neutrals Mixture-6.3	1 mL in Benzene-D ₆
---------	----------------------------------	--------------------------------

Labeled		
(EPA 272B)	Benz[<i>a</i>]anthracene (D₁₂,98%)	5000
(EPA 267B)	Butyl benzyl phthalate (3,4,5,6-D₄,99%)	5000
(EPA 243B)	Bis(2-chloroethoxy) methane (D₈,98%)	5000
(EPA 266B)	Bis(2-ethylhexyl) phthalate (3,4,5,6-D₄,99%)	5000
(EPA 282B)	Dibenz[<i>a,h</i>]anthracene (D₁₄,98%)	5000
(EPA 225B)	1,2-Dichlorobenzene (D₄,99%)	5000
(EPA 227B)	1,4-Dichlorobenzene (D₄,98%)	5000
(EPA 271B)	Dimethyl phthalate (3,4,5,6-D₄,99%)	5000
(EPA 236B)	2,6-Dinitrotoluene (methyl-D₃,98%)	5000
(EPA 256B)	Nitrobenzene (D₅,99%)	5000
(EPA 629B)	1,2,3-Trichlorobenzene (4,5,6-D₃,98%)	5000

U.S. EPA Methods 1624/1625 Standard Mixtures

Catalog #	Compound	Amount
ES-2032	Purgeables/Volatiles Mixture-E.1	1 mL in Methanol-D ₄

Labeled		(µg/mL)
(EPA 206V)	Carbon tetrachloride (¹³C,99%)	50
(EPA 207V)	Chlorobenzene (D₅,99%)	50
(EPA 223V)	Chloroform (¹³C,99%)	50
(EPA 213V)	1,1-Dichloroethane (2,2,2-D₃,98%)	50
(EPA 229V)	1,1-Dichloroethylene (2,2-D₂,98%)	50
(EPA 244V)	Methylene chloride (D₂,99.9%)	50
(EPA 232V)	1,2-Dichloropropane (D₆,98%)	50
(EPA 214V)	1,1,2-Trichloroethane (¹³C₂,99%)	50

ES-2006	Purgeables/Volatiles Mixture-F	1 mL in Methanol-D ₄
---------	---------------------------------------	---------------------------------

Labeled		
EPA 204V)	Benzene (D₆,99.5%)	50
(EPA 247V)	Bromoform (¹³C,99%)	50
(EPA 210V)	1,2-Dichloroethane (D₄,99%)	50
(EPA 238V)	Ethylbenzene (D₁₀,98%)	50
(EPA 215V)	1,1,2,2-Tetrachloroethane (D₂,99.6%)	50
(EPA 286V)	Toluene (D₈,99.5%)	50
(EPA 211V)	1,1,1-Trichloroethane (2,2,2-D₃,98%)	50

NEW ES-2007-A	Purgeables/Volatiles Mixture-G	1 mL in Methanol-D ₄
----------------------	---------------------------------------	---------------------------------

Labeled		
EPA 616V)	Acetone (D₆,99.9%)	250
(EPA 203V)	Acrylonitrile (D₃,99%)	250
(EPA 246V)	Bromomethane (D₃,99%)	250
(EPA 614V)	2-Butanone (4,4,4-D₃,98%)	250
(EPA 216V)	Chloroethane (D₅,98%)	250
(EPA 245V)	Chloromethane (D₃,99%)	250
(EPA 615V)	Diethyl ether (D₁₀,99%)	250
(EPA 288V)	Vinyl chloride (D₃,98%)	250

ES-2008	Purgeables/Volatiles Mixture-H	1 mL in Methanol-D ₄
---------	---------------------------------------	---------------------------------

Labeled		
EPA 248V)	Bromodichloromethane (¹³C,99%)	50
(EPA 251V)	Chlorodibromomethane (¹³C,99%)	50
(EPA 30V)	1,2-Dichloroethylene (1,2-D₂,98%)	50
(EPA 33V)	1,3-Dichloropropene (D₄,98%)	50
(EPA 627V)	1,4-Dioxane (D₈,99%)	50
(EPA 285V)	Tetrachloroethylene (¹³C₂,99%)	50
(EPA 287V)	1,1,2-Trichloroethylene (¹³C₂,99%)	50

U.S. EPA Methods 1624/1625 Standard Mixtures

Catalog #	Compound	Amount
ES-2033	Semi-Volatiles Mixture-1/Appendix C	1 mL in Benzene-D ₆

Labeled	(µg/mL)
(EPA 617B) <i>n</i>-Decane (D₂₂,98%)	5000
(EPA 605B) Dibenzofuran (D₈,98%)	5000
(EPA 604B) Dibenzothiophene (D₈,98%)	5000
(EPA 612B) Biphenyl (D₁₀,98%)	5000
(EPA 608B) Diphenyl ether (phenyl-D₁₀,98%)	5000
(EPA 606B) <i>n</i>-Dodecane (D₂₆,98%)	5000
(EPA 621B) <i>n</i>-Eicosane (D₄₂,98%)	5000
(EPA 619B) <i>n</i>-Hexadecane (D₃₄,98%)	5000
(EPA 613B) 2-(4-Methylphenyl) propane (D₁₄,98%)	5000
(EPA 610B) Styrene (2,3,4,5,6-D₅,98%)	5000
(EPA 609B) α-Terpineol (D₃,98%)	5000
(EPA 623B) <i>n</i>-Tetracosane (D₅₀,98%)	5000
(EPA 626B) <i>n</i>-Triacontane (D₆₂,98%)	5000

ES-2042	EPA 1624/ 1625 Standards Kit	1 Set
---------	-------------------------------------	-------

Contains 1 ampoule each of the following

ES-2036	Acid Extractables Mixture-3
ES-2022-A	Base Neutrals Mixture-4.1
ES-2002	Base Neutrals Mixture-4.3
ES-2025-A	Base Neutrals Mixture-5.1 (ES-2041-A and ES-2026)
ES-2003	Base Neutrals Mixture-6.2
ES-2004	Base Neutrals Mixture-6.3
ES-2032	Purgeables/Volatiles Mixture-E.1
ES-2006	Purgeables/Volatiles Mixture-F
NEW ES-2007-A	Purgeables/Volatiles Mixture-G
ES-2008	Purgeables/Volatiles Mixture-H
ES-2033	Semi-Volatiles Mixture-1/Appendix C