

CIL

Cambridge Isotope Laboratories, Inc.
www.isotope.com

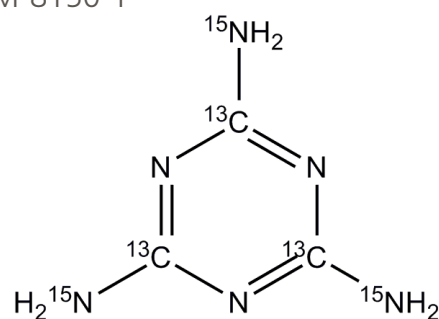
Melamine & Melamine Byproduct Standards

- Melamine
- Ammeline
- Ammelide
- Cyanuric Acid

Melamine ($^{13}\text{C}_3$, 99%; amino- $^{15}\text{N}_3$, 98%)

1.2 mL @100 $\mu\text{g/mL}$ in water

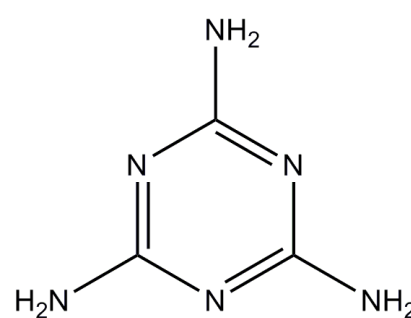
CNLM-8150-1



Melamine (unlabeled)

1.2 mL @100 $\mu\text{g/mL}$ in water

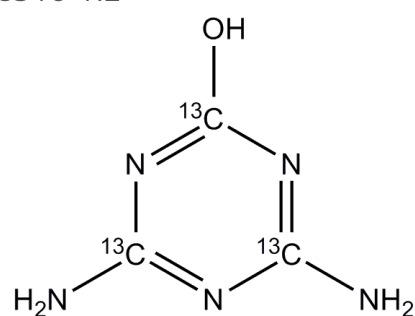
ULM-8156-1.2



Ammeline ($^{13}\text{C}_3$, 99%)

Inquire

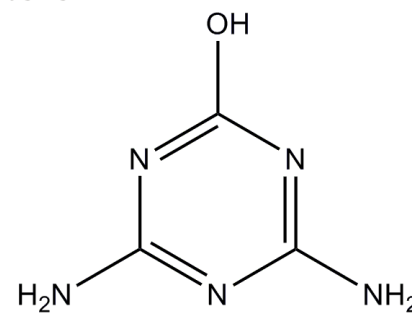
CLM-8316-1.2



Ammeline (unlabeled)

Inquire

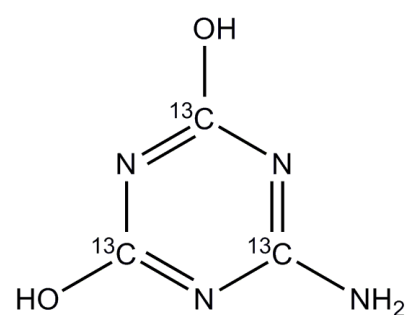
ULM-8323-1.2



Ammelide ($^{13}\text{C}_3$, 99%)

1.2 mL @100 $\mu\text{g/mL}$ in water:diethylamine (80:20 v/v)

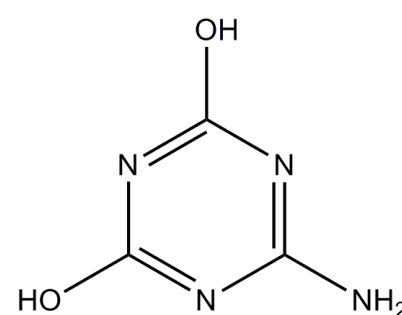
CLM-8589-1.2



Ammelide (unlabeled)

1.2 mL @100 $\mu\text{g/mL}$ in water:diethylamine (80:20 v/v)

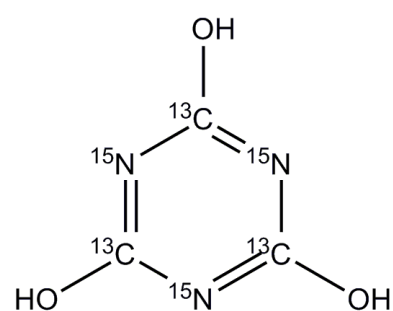
ULM-8590-1.2



Cyanuric Acid ($^{13}\text{C}_3$, 99%; $^{15}\text{N}_3$, 98%)

1.2 mL @100 $\mu\text{g/mL}$ in water

CNLM-4661-1.2



Cyanuric Acid (unlabeled)

1.2 mL @100 $\mu\text{g/mL}$ in water

ULM-8157-1.2

