



# Uniformly $^{13}\text{C}$ -Labeled Chlorinated Cyclodiene Pesticides

With increased interest in human exposure, and links to carcinogenicity, researchers have been trying to improve analyses of chlorinated cyclodiene pesticides. Use of Isotope Dilution Mass Spectrometry has had mixed results because existing standards are not uniformly labeled.

Cambridge Isotope Laboratories is pleased to announce the next generation of isotopically enriched chlorinated Cyclodiene Pesticides. These standards are uniformly  $^{13}\text{C}$  labeled, ensuring maximum distinction from native chlorine clusters, and reduced complexity from fragmentation of randomly labeled species.

Look to CIL for isotopically labeled standards for the new millennium.

Catalog #	Compound (Isotope, Atom % Enrichment)	Price
CLM-4726	Dieldrin ( $^{13}\text{C}_{12}$ , 99%)	\$ 950
CLM-4725	Aldrin ( $^{13}\text{C}_{12}$ , 99%)	\$ 895
CLM-4727	Isodrin ( $^{13}\text{C}_{12}$ , 99%)	\$ 895
CLM-4782	Endrin ( $^{13}\text{C}_{12}$ , 99%)	\$ 950
CLM-4815	Endrin Aldehyde ( $^{13}\text{C}_{12}$ , 99%)*	\$ 475
CLM-4816	Endrin Ketone ( $^{13}\text{C}_{12}$ , 99%)*	\$ 475
CLM-4729	Oxychlordane ( $^{13}\text{C}_{10}$ , 99%)	\$ 950
CLM-4735	trans-Nonachlor ( $^{13}\text{C}_{10}$ , 99%)	\$ 950
CLM-4811	cis-Nonachlor ( $^{13}\text{C}_{10}$ , 99%)	\$ 895
CLM-4758	Chlordene ( $^{13}\text{C}_{10}$ , 99%)	\$ 895
CLM-4792	Chlordane ( $^{13}\text{C}_{10}$ , 99%)	\$ 895
CLM-4759	Heptachlor ( $^{13}\text{C}_{10}$ , 99%)	\$ 895
CLM-4734	Heptachlor Epoxide ( $^{13}\text{C}_{10}$ , 99%)	\$ 895
CLM-4813	Mirex ( $^{13}\text{C}_{10}$ , 99%)	\$ 895
CLM-4814	Kepone ( $^{13}\text{C}_{10}$ , 99%)	\$ 895

*All standards are 1.2  $\mu\text{l}$  @ 100 mg/ml in Nonane*

*\*Except Endrin Aldehyde and Endrin Ketone which are 50mg of neat material with reconstitution instructions.*



50 Frontage Road, Andover, MA 01810-5413 USA

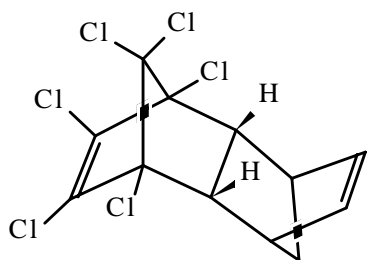
PH: 800.322.1174 (USA) PH: 978.749.8000 PH: 800.643.7239 (CANADA) FAX: 978.749.2768

E-MAIL: [cilsales@isotope.com](mailto:cilsales@isotope.com) URL: <http://www.isotope.com>

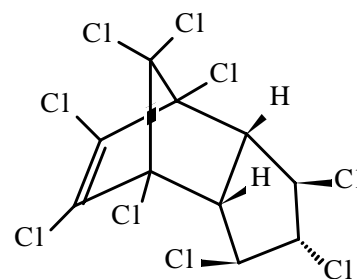
**CAMBRIDGE ISOTOPE LABORATORIES, INC.**

# New $^{13}\text{C}$ Pesticides

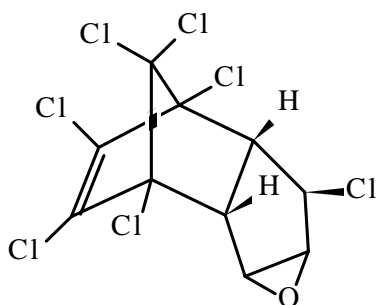
## Only from CIL



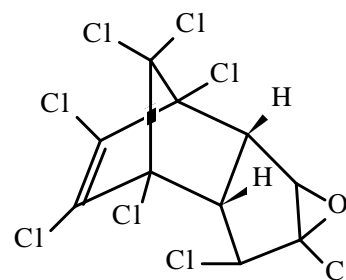
Aldrin ( $^{13}\text{C}_{12}$ , 99%)



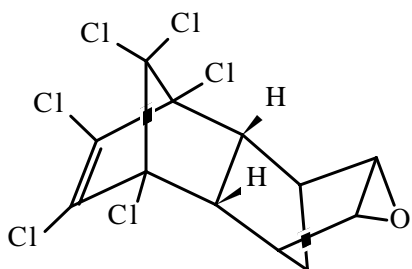
trans-Nonachlor ( $^{13}\text{C}_{10}$ , 99%)



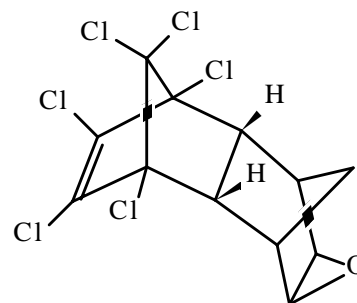
Heptachlor epoxide ( $^{13}\text{C}_{10}$ , 99%)



Oxychlordane ( $^{13}\text{C}_{10}$ , 99%)



Dieldrin ( $^{13}\text{C}_{12}$ , 99%)



Endrin ( $^{13}\text{C}_{12}$ , 99%)



50 Frontage Road, Andover, MA 01810-5413 USA

PH: 800.322.1174 (USA) PH: 978.749.8000 PH: 800.643.7239 (CANADA) FAX: 978.749.2768

E-MAIL: [cilsales@isotope.com](mailto:cilsales@isotope.com) URL: <http://www.isotope.com>